

Purus now featured
on **bim**
object®
www.purusgroup.com

Page 4-5 **Purusline Living Tile Solution**
Linear drains, Tanking Kits & Former Trays

Page 6 **59mm Purus Line**
Low-level linear drains for tiles

Page 7 **Purusline Living Plus**
Linear drains for vinyl flooring

Page 8-9 **Channel 100 Linear**
Channel drainage up to 2.5m

Page 10 **59mm S-Series Gullies**
Super low level drains & more

Page 11 **Mini Series Floor Gullies**
Plastic drains for vinyl & tiles

Page 12 **Grates & Wetroom Trays**
inc. Self-Supporting Former Trays

Page 13-14 **Stainless Steel Channels**
For kitchens, factories & more

Page 14-15 **PUM, Sediment Traps,
Sanitaryware & Worktops**

HIGH QUALITY SWEDISH DESIGN

Drainage solutions to suit all requirements

- from domestic wetrooms to residential,
commercial and industrial projects



Purus Limited

Purus is one of Scandinavia's leading suppliers and manufacturers of wetroom and level-access drainage solutions for the health, leisure, hotel and hospitality industries as well as domestic and social housing.

Purus Limited, based in Leeds, specialises in a range of drainage solutions including floor gullies for vinyl and tiled floors, linear drainage solutions and stainless steel channels for commercial and industrial use. Many Purus products, including the Mini Series Floor Gullies, are featured on BIMobject and are also BBA Certified.

Purusline Living, Purusline Living **Plus⁺ and 59mm Purus Line**

The Purusline Living is Purus' linear wetroom solution which allows you to create a beautiful, functional and stylish space in your tiled bathroom. Purus offer the Purusline Living channel in lengths of 600mm and 800mm, with three options of gully to suit your installation; and two stainless steel grates to create your perfect finish. These are the Tile Insert grate, which allows for a minimalistic look where the tiles sit into the grate to match the wetroom floor; and the Twist patterned grate. Purusline Living channels all have BBA Certification and are featured on BIM.

For vinyl flooring, the Purusline Living Plus for Vinyl is Purus' linear solution. This is available in six different lengths and has a stainless steel Chess patterned grate.

Purus also offer a linear solution with a total channel height of just 59mm: the Purus Line. This is suitable for tiled floor finishes in concrete subfloors.

Channel 100: Stainless steel linear channel drainage

The Channel 100 is Purus' stainless steel linear channel drainage solution, available in lengths of up to 2.5m as standard for industrial and commercial situations including shower areas, changing rooms, hotel and leisure facilities; as well as factories, breweries and much more. A bespoke service, as well as a wider range of stainless steel drainage solutions, is also available.

Floor Gullies

A wide range of Purus Floor Gullies for vinyl, tiled and resin floors are available in plastic and stainless steel. Purus' BBA-Certified Minimax 50 is their popular floor gully with a height of just 76mm including falls, and incorporates the NOOD no-odour water trap. The NOOD will not allow any foul air to leave the drain even when it dries out, making it ideal for use in health facilities, disabled access wetrooms and care homes.

Purus' full Mini Series floor gullies range includes the Minimax Two Part, designed for simple installation into former trays, and the Mini Brage 50/110, which have vertical outlets. Stainless steel grates for both vinyl and tiled floors are available for all Mini Series gullies.

Purus have also recently launched their brand new 59mm S-Series floor gully for concrete floors with a vinyl or tiled finish, which also incorporates their NOOD trap technology. With a total height of just 59mm, the S-Series gully can fit into very shallow screeds.

Plumbing Products, Sanitaryware & More

Alongside their large range of floor gullies and linear channels, Purus also manufacture plumbing products, stainless steel sanitaryware including their popular V55 Plaster Separators and V220 Sediment Traps, and much more.

Please browse the brochure for more information – and visit www.purusgroup.com for technical drawings, document downloads and more.

Purusline Living Linear Wetroom Solution

For domestic and commercial projects including hotels, student accommodation and sports facilities.

Ordering a complete Purusline Living Linear wetroom kit is as easy as 1, 2, 3!

Just follow these steps:

1

Channel - choose your grate and outlet

All the options are detailed on the next page

2

Do you have floorboards?

If yes, you need a Centre Linear Former Tray. If not, proceed to 3

3

Order a Tanking Kit for every 8m²

Purusline Living for Tiles

Make your bathroom design possibilities come alive! The Purusline Living is our flexible wetroom solution - choose from 2 lengths, 3 outlet types and 2 stainless steel grates: the Tile Insert Grate and the patterned Twist grate. The Purusline Living is BBA-Certified and all outlets come complete with our NOOD no-odour trap.

The Purusline Living is available in lengths of 600mm and 800mm, with outlets available in Side, Side Side/Inline and Low - perfect for where there is limited space in the floor. All outlets are self-cleaning and the channels have built-in falls to ensure there is no dirt or odour build up. The Purusline Living opens up completely new opportunities for exciting designs in the bathroom.

Outlet gullies



Side outlet

Flow rate: min. 60 litres/minute
Total channel height: 137-141mm



Low outlet

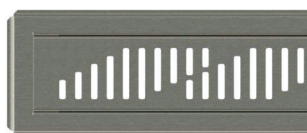
Flow rate: min. 30 litres/minute
Total channel height: 93-97mm



Side side/inline outlet

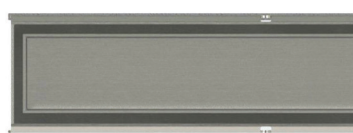
Flow rate: min. 60 litres/minute
Total channel height: 140-144mm

Stainless steel grates



Twist grate

For tiles 10-26mm thick



Tile Insert grate

For tiles up to 10mm thick

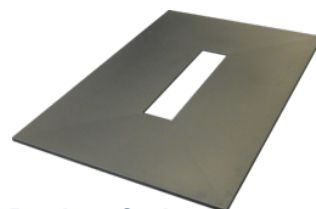
NOOD no-odour trap

The innovative NOOD no-odour (NOOD) trap is included in all Purusline Living gullies, having been successfully used in the UK and Scandinavia for decades. A built-in spring mechanism also acts as a non-return valve and ensures the trap always remains sealed, even when dried out.



Purusline Living Former Trays - for Joist Installations

When installing into joist floors, the Purusline Living Tray, designed for use with the Purusline Living and the Puragum Tanking Kit, is the perfect solution for simple installation. The Tray is installed on top of your floorboards and has falls built in for the shower water to flow into the gully. It comes in two sizes for use with the Purusline Living: 1400x920x18mm and 1600x920x18mm. The Tray can be cut to size and scribed to the wall if desired.



Product Codes

1400x920mm: PLCENT600
1600x920mm: PLCENT800

Puragum Tanking Kit

Each Puragum Tanking Kit covers 8m² and is designed to waterproof plasterboard, concrete and marine ply in your wetroom before tiling. The tanking kit is waterproof, not water resistant. The tapes are elastic and accommodate any movements of the wall/floor and corner joints. The Puragum is easy to tile upon as it gives a mechanical key. Always ensure that all areas coming into contact with water are fully tanked and sealed. We recommend tanking the whole wetroom.



Product Code: PTK001

Product codes - Purusline Living 600

	Twist	Tile Insert
Side	52740	52737
Side Side	52741	52738
Low	52742	52739

Product codes - Purusline Living 800

	Twist	Tile Insert
Side	52746	52743
Side Side	52747	52744
Low	52748	52745

59mm Super Low-level Linear Drains for Tiles: for domestic, residential & commercial projects

Our brand new Purus Line system has a total height of just 59mm, making it the ideal solution for shallow screeds. Three different options are detailed below, with all options including a Low outlet with a NOOD no-odour water trap.

Purus Line - Tile Insert

The Purus Line - Tile Insert comes in lengths of 600mm - 1000mm and includes a Tile Insert grate which your choice of tiles, up to 10mm in thickness, are installed in to.

Product Codes 800mm: 3401854
600mm: 3401816 900mm: 3401872
700mm: 3401835 1000mm: 3401891



Adapter

A 50mm to 1½" adapter must be ordered for use with the Purus Line.



Product code:
52576

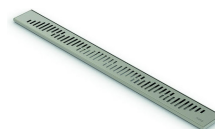
Purus Line - Stainless steel patterned grates

The Purus Line is available in lengths of 600mm - 1200mm, with six different patterns of grates available. These are suitable for tiles with a thickness of 10-26mm. This product is ordered as two parts: the body and the grate.

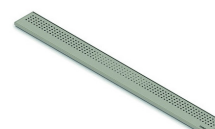


Product Codes

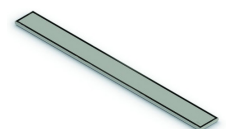
600mm: 7114617 800mm: 7114627 1000mm: 7114637
700mm: 7114622 900mm: 7114632 1200mm: 7114675



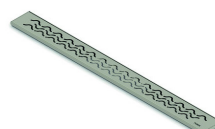
Twist



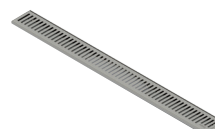
Pearl



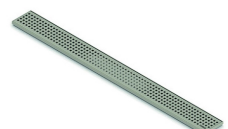
Platinum



Wave



Rib



Chess

Purus Line Premium

The Purus Line Premium comes in lengths of 600mm - 1200mm and includes a stainless steel frame which your choice of tiles are installed on top of, giving a discrete and elegant finish to your wetroom with no stainless steel edges visible. It can be installed against the wall or in the centre of the wetroom area.



Product Codes

600mm: 7110543 800mm: 7110555 1000mm: 7110567
700mm: 7110549 900mm: 7110561 1200mm: 7110573

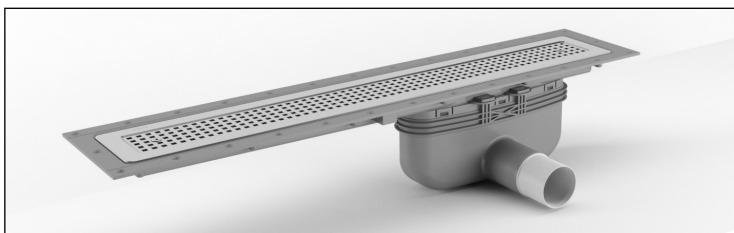
Purusline Living **Plus⁺** for Vinyl: for care homes, hospitals & domestic areas

The Purusline Living Plus for Vinyl is our newest linear drainage solution in 5 different lengths from 600mm to 1000mm. With a patterned Chess grate in stainless steel and a drain body in PP plastic, the Purusline Living Plus has many similarities to our popular Purusline Living, but has been redesigned with a new clamping ring system to be suitable for vinyl flooring. It makes a great alternative to our Mini Series floor gullies where a linear finish is preferred, and is therefore popular in care homes, domestic properties and hospitals as well as hotels, spas and sports centres. The Purusline Living Plus channels are available with Side, Low and Side Side outlets.

The Purusline Living Plus can be installed into either joist or concrete flooring, with a Self-Supporting Tray used when installing into joists (600mm and 800mm lengths only). All outlets come with a built-in NOOD no-odour trap, which ensures that even if the drain dries out, no foul air or bad odours will come up because the spring-loaded trap keeps itself closed. The NOOD can be easily removed for cleaning and maintenance with a built-in handle.



Purusline Living Plus for Vinyl - outlet gully options

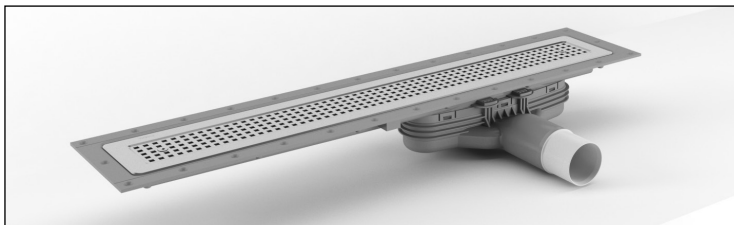


Purusline Living Plus for Vinyl with Side outlet

Flow rate:
60-72 litres/minute
Total channel height:
124-126mm

Product Codes

600mm: 53303
700mm: 53309
800mm: 53315
900mm: 53321
1000mm: 53327

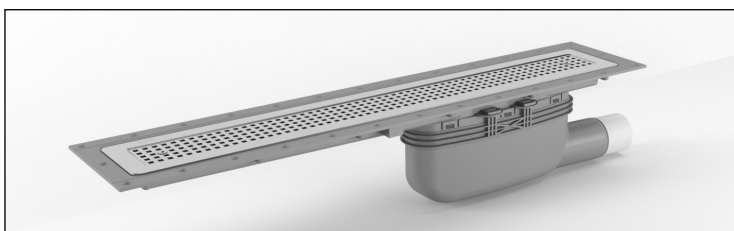


Purusline Living Plus for Vinyl with Low outlet

Flow rate:
30-36 litres/minute
Total channel height:
73mm

Product Codes

600mm: 53304
700mm: 53310
800mm: 53316
900mm: 53322
1000mm: 53328



Purusline Living Plus for Vinyl with Side Side outlet

Flow rate:
60-72 litres/minute
Total channel height:
126mm

Product Codes

600mm: 53305
700mm: 53311
800mm: 53317
900mm: 53323
1000mm: 53329

Purus Channel 100: for changing rooms, leisure, factories & micro-breweries

Stainless steel channels **up to 2.5m** for industrial and commercial situations - a slim drainage gully with the high flow rate of wider channels. Longer lengths available as bespoke.

The Channel 100 is our most popular stainless steel channel drainage system and is an ideal solution for shower areas, changing rooms and hotel and leisure facilities; as well as industrial areas such as factories and breweries. It is designed for installation into concrete floors with vinyl, tiled, resin, micro-cement or concrete finishes and comes in standard lengths up to 2.5m.

Many different configurations are available as standard - you have a choice of four grate types plus the Tile Insert grate if installing into a tiled floor finish; and the outlet can be positioned in the centre or the end of the channel. The Chess and Rib patterned stainless steel grates are ideal for bare-foot areas whilst the L15 and M125 load-bearing mesh grates are designed to suit heavy-duty industrial use. Bespoke channels in different lengths and/or 316 grade acid-resistant stainless steel, as well as many other modifications, can also be designed and manufactured to your requirements. Please contact Purus for details.

Outlet positions for standard lengths

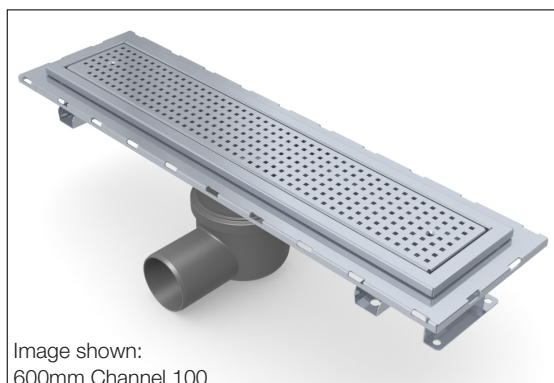


Image shown:
600mm Channel 100

Central outlet

with very slight falls built in for a shallower channel depth.
Shown here with the stainless steel Chess grate.

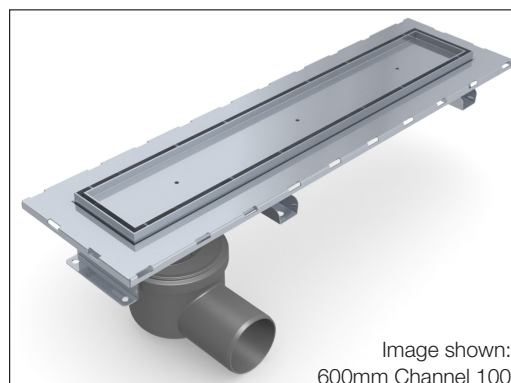


Image shown:
600mm Channel 100

End outlet

with falls built in towards an outlet at one end.
Shown here with the Tile Insert grate.

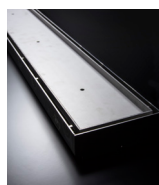
Stainless steel grates



Mesh grate
L15 (up to 1,500kg)
M125 (up to 12,500kg)



Rib grate



Tile Insert grate
for tiles up to a
height of 10mm



Chess grate

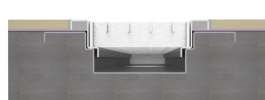
Floor types



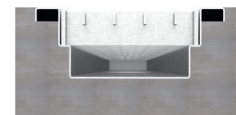
Vinyl floors



Resin & micro-cement floors



Tiled floors
available with clamping frame or
gluing flange



Concrete floors

Outlet gullies

All outlet gullies for the Channel 100 come with a water trap and a stainless steel strainer as standard.



**Side 75mm
Stainless steel**
Flow rate: 75l/min



**Bottom 110mm
Stainless steel**
Flow rate: 81l/min



**Bottom 75mm
Stainless steel**
Flow rate: 75l/min



**Side 50mm
Plastic**
Flow rate: 57l/min



**Side 75mm
Plastic**
Flow rate: 75l/min



**Bottom 75mm
Plastic**
Flow rate: 75l/min



**Low 50mm
Plastic**
Flow rate: 30l/min

Standard lengths

The Purus Channel 100 is available in standard lengths from 600mm up to 2.5m, which are detailed below. Bespoke lengths are also available - please contact Purus for details.

- 600mm
- 800mm
- 900mm
- 1000mm
- 1100mm
- 1200mm
- 1400mm
- 1500mm
- 2000mm
- 2500mm



Technical drawings, product codes and more at www.purusgroup.com. A full Channel 100 brochure is also available - please contact Purus to request your copy.

A full bespoke service is available on request. All channels can be manufactured in acid-resistant 316 stainless steel; and we are also able to cater for bespoke lengths, widths, grates, outlet positions and much more. Please contact Purus directly for further information.



59mm super-low level gully for shallow screeds in care homes, hospitals, social housing & wetrooms

Minimax 59mm S-Series

By increasing the width and changing the clamping ring of the Minimax 50, we have been able to create our brand new Minimax S-Series floor gully with an even shallower depth of just **59mm**. Stainless steel grates for the Minimax 59mm S-Series are available for both tiled and vinyl floors.

Product code: 7110406UK



PK200 Grates for tiled floors



Classic
7138377



Art Deco
7138374



Drop
7138376



Wave
7138375

Drop grate for vinyl floors, including Torx screws



Product code: 7129507
Grate with Security Torx screws also available - please ask for details

Minimax S-Series
59mm Support
Product code: 7129497



Stainless floor gullies

Stainless steel floor gullies

Alongside our Mini Series and 59mm S-Series floor gullies, a range of gullies made in stainless steel is also available. The gullies vary in dimensions and outlet configurations and the full range is available to view at www.purusgroup.com. Here's just a taster!



Balder 50 R
Prod. code: 7118089
Diameter: 150mm
Outlet: Vertical 50mm



Rens 110 R
Prod. code: 7060701
Diameter: 150mm
Outlet: Vertical 110mm



Bigg 110 R
Prod. code: 7102835
Diameter: 220mm
Outlet: Side 110mm



Heavy 110 R
Prod. code: 7102837
Diameter: 220mm
Outlet: Vertical 110mm

Mini Series floor gullies for care homes, social housing, hotels & residential wetrooms

4 floor gullies with a choice of horizontal or vertical outlets for vinyl, tile, resin & micro-cement floor finishes.

The Purus Minimax, Mini Brage 50 & Mini Brage 110 make up our range of BBA-Certified Mini Series floor gullies, suitable for vinyl, tiled and resin floors. With a grate diameter of 130mm, all come complete with a plastic grate, clamping ring, and a specially designed top-access water trap with NOOD no-odour function. The NOOD ensures that even if the drain dries out, no foul air or bad odours will come up because the spring-loaded trap keeps itself closed. The NOOD can be easily removed for cleaning and maintenance with a built-in handle.

The Mini Series floor gullies can all be used as an outlet without the NOOD water trap.

Mini Series floor gullies



Minimax Two Part
Product code: 52719
Flow rate: 48l/m



Minimax 50
Product code: 7113764UK
Flow rate: 48l/m

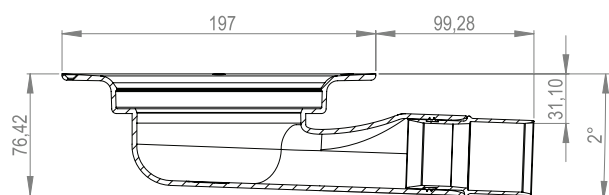


Mini Brage 50
Product code: 7113539UK
Flow rate: 48l/m



Mini Brage 110
Product code: 7113538UK-F
Flow rate: 48l/m

The Purus Minimax 50 is our horizontal floor gully solution with an extra low profile: it has a total height of just 76mm including falls and the NOOD no-odour trap.



NOOD trap

The innovative NOOD no-odour (NOOD) combined water and mechanical trap is included in all Mini Series floor gullies, having been successfully used in the UK and Scandinavia for decades. A built-in spring mechanism also acts as a non-return valve and ensures the trap always remains sealed, even when dried out.



Accessories & spare parts



Purus Knife
Product code: 7113605



NOOD water trap
Product code: 7113765



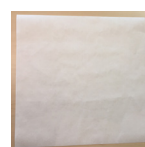
Flexi-NOOD water trap
Product code: 7138414



Clamping ring
Product code: 7141316



50mm to 1 1/2 inch adapter
Product code: 52576



Butyl gasket
Product code: 70004

or

Non-adhesive gasket
Product code: 70001



Locking nuts for 7138394 Wave grate
Product code: 7138426UK

Grates & wetroom trays

A selection of stainless steel grates and wetroom trays are available for vinyl, tiled, resin and micro-cement floor finishes to complement our Mini Series floor gullies.

PK155 & PK200 grates for tiled floors



Classic

155x155mm: 7138359
200x200mm: 7138377



Art Deco

155x155mm: 7138358
200x200mm: 7138374



Drop

155x155mm: 7138360
200x200mm: 7138376



Wave

155x155mm: 7138361
200x200mm: 7138375



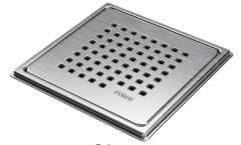
Pearl

200x200mm: 53392



Rib

155x155mm: 53386
200x200mm: 53391



Chess

155x155mm: 53385
200x200mm: 53390

Tile adapter grates for tiled floors



Tile Insert

Product code: 52728



Twist

Product code: 52729



Platinum

Product code: 52730

Round grates for vinyl floors



Drop

Product code: 7138392



Wave (lockable)

Product code: 7138394
Locks ordered separately



Art Deco

Product code: 7138400

Other grates



PK150 Standard Grate
Product code: 7138354

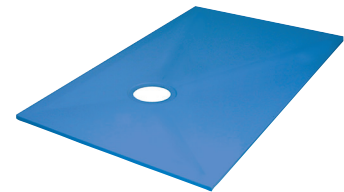


Wave grate for resin & micro-cement
Product code: 7138402

Self-Supporting Wetroom Former Trays

Load bearing up to 470kg

Our Self-Supporting trays have falls built into them for simple installation of our floor gullies into either joist or concrete floors. Suitable for vinyl and tiled floors.



Many sizes available
All trays have an outer depth of 22mm
Outlets off-centre unless stated otherwise

1000x1000mm: 71010
1135x770mm: 71107
1300x800mm: 71308
1500x800mm: 71508
1500x800mm Centre: 700202C
900x900mm: 70909
1400x900mm: 71409
1400x900mm Centre: 700201C
1800x800mm: 70808
1450x1150mm: 71411
1200x1200mm: 71212



Stainless steel channels

A wide range of stainless steel channels are available for commercial and industrial environments.

As well as our popular Channel 100, we also offer other stainless steel channels to meet your specific requirements. The Channel 200 and Channel 300 are available in standard lengths up to 2.5m, and our Industrial, Laundry and Kitchen Channels are all also available in a range of dimensions. A bespoke service is also available including the option to manufacture in acid-resistant 316 stainless steel - please contact us for further details. All stainless steel channels are suitable for a range of floor types.

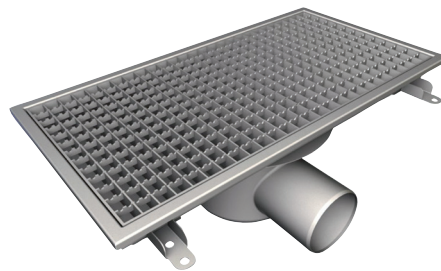
Channel 200

- channel width of 200mm
- suitable for concrete, vinyl, tiled and resin floors
- a wide range of lengths up to 2.5m



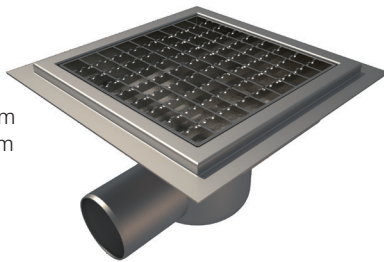
Channel 300

- channel width of 300mm
- suitable for concrete, vinyl, tiles and resin floors
- a wide range of lengths up to 2.5m



Square-Top Gullies

- suitable for concrete, vinyl, tiled and resin floors
- L15 mesh grate
- 200x200 or 300x300mm
- gullies available in 75mm or 110mm



Industrial Channels

- ideal for areas where high hygiene levels are not a priority - e.g. in factories and garages
 - L15 mesh grate
- 300x300 or 500x300mm



Laundry Channels

- ideal for areas where high hygiene levels are not a priority - e.g. in laundry areas and garages
- L15 mesh grate
- 300x300 or 500x300mm



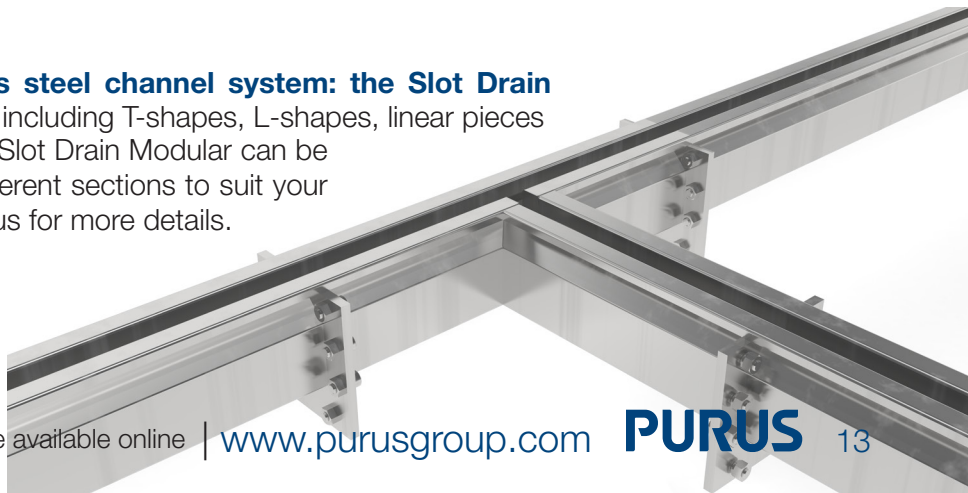
Kitchen Channels

- very high flow rates to facilitate use in kitchens and food preparation areas
 - L15 mesh grate
- 400x400, 600x400, 800x500 or 900x600mm



Slot Drain Modular

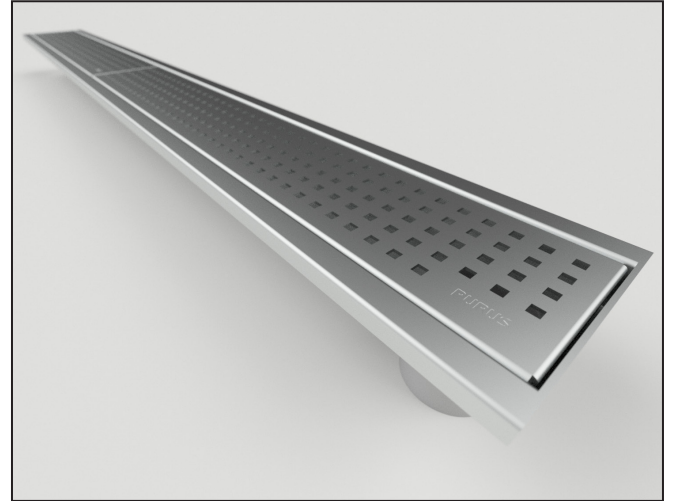
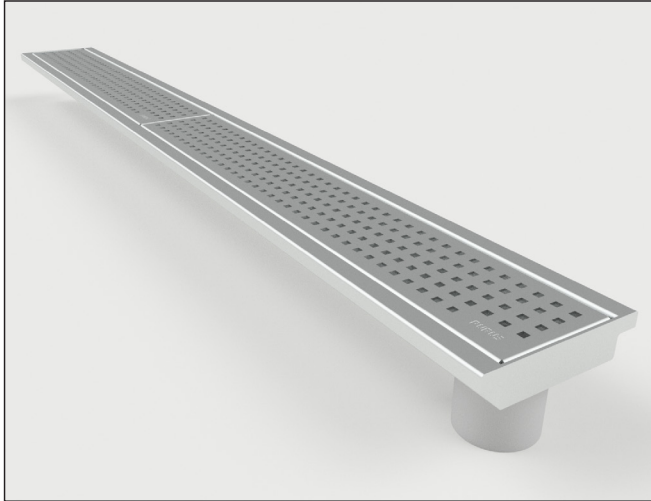
Introducing Purus' newest stainless steel channel system: the Slot Drain Modular. Made up of component parts including T-shapes, L-shapes, linear pieces and larger mesh drainage sections; the Slot Drain Modular can be connected and installed together as different sections to suit your exact requirements. Please contact Purus for more details.



Balcony Channels for patio areas & external balconies

Purus' new Balcony Channels are super-low level stainless steel drainage channels optimised for use on balconies and in patio areas. These are manufactured fully in 316-grade acid-resistant stainless steel for outdoor use in a range of lengths, and all include a 50mm pipe outlet.

Please contact Purus or visit www.purusgroup.com for further details and to specify.



Stainless kitchen worktops

Our stainless steel Kitchen Worktops in lengths up to 3400mm can be made with a range of widths, depths, sink designs, shapes, rear details and corner configurations.

Please go online to view our Kitchen Worktops brochure.



Sediment Traps & Plaster Separators for art schools, Universities and hospitals

Our V220 Sediment Traps and V55 Plaster Separators are frequently used by art schools, colleges and universities; as well as hospitals and dental practices. They are both designed to stop the deposition of substances such as plaster and sand, which are often flushed through the outlet and block the pipes. The Sediment Traps and Plaster Separators separate these substances from the water and hold them back in a removable bottom section for simple disposal.



V220 Sediment Trap
Product code: 7647019



V55 Plaster Separator
Product code: 8037905

Purus Universal Membrane

Basin/bidet waste with Purus Universal Membrane technology

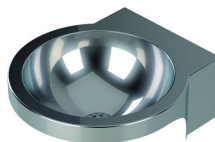
The Purus Basin/Bidet Waterless Waste with revolutionary PUM – Purus Universal Membrane – technology is a new low-level membrane which saves space without reducing the flow capacity, by replacing current S-traps and P-traps.



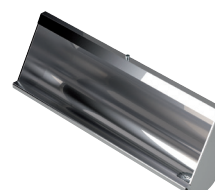
Basin/bidet waste with PUM, white
Product code: 53030

Stainless steel sanitaryware

Suitable for both domestic and public environments, our stainless steel sanitaryware is robust, durable and of high quality. The range of stainless steel toilets and urinals are practical for surroundings where there are tough requirements for durability and hygiene such as in public toilets, sports centres, restaurants and public institutions.



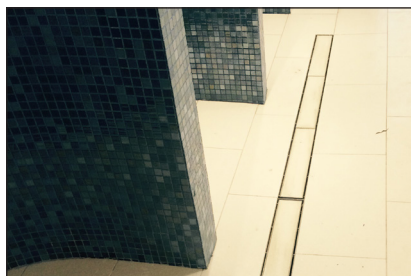
V214 Sink
Product code: 7631214



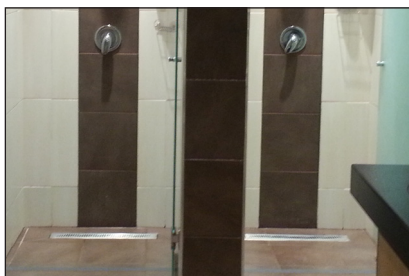
V301 Urinal trough
Lengths from 1200mm to 2400mm



V130 WC
Product code: 7969018



Ocean Village
Channel 100



Kedleston Park Golf Club
Purusline Living



Student Accommodation
Purusline Living



The Wilton Centre Gym
Bespoke Channel 100



Hotel project
Mini Series floor gullies



Lord Street Care Home
Mini Series floor gullies

www.purusgroup.com

Product details, CAD & PDF drawings, BIMObjects and much more available online

Purus Ltd.
Suite 6, Arena Park, Tarn Lane,
Scarcroft, Leeds LS17 9BF

Tel: +44 (0) 113 289 3172
+44 (0) 844 800 1651
Fax: +44 (0) 113 289 3778

info@purusgroup.com
www.purusgroup.com



bim
object®

PURUS

Our ongoing product development may entail changes in version, design and construction, and we reserve the right to make such changes.