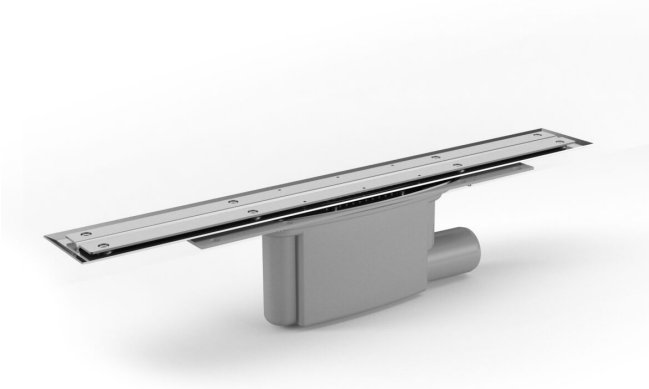


## Item 7110546



The Purus Line Premium 600 is a complete linear floor drain with a gable 50 mm outlet. It is designed for installation in wooden or concrete joists. The Purus Line Premium comes complete with a removable NOOD water trap, strainer, stainless steel clamping ring, installation kit, stainless steel frame and the Premium frame which tiles are fixed on to. The NOOD water trap is a mechanical trap which closes when there is no water present, thus preventing any foul air from escaping through the drain. This linear floor drain can be installed against the wall or elsewhere in the room.

## Item 7110552

The Purus Line Premium 700 is a complete linear floor drain with a gable 50 mm outlet. It is designed for installation in wooden or concrete joists. The Purus Line Premium comes complete with a removable NOOD water trap, strainer, stainless steel clamping ring, installation kit, stainless steel frame and the Premium frame which tiles are fixed on to. The NOOD water trap is a mechanical trap which closes when there is no water present, thus preventing any foul air from escaping through the drain. This linear floor drain can be installed against the wall or elsewhere in the room.

## Item 7110558

The Purus Line Premium 800 is a complete linear floor drain with a gable 50 mm outlet. It is designed for installation in wooden or concrete joists. The Purus Line Premium comes complete with a removable NOOD

water trap, strainer, stainless steel clamping ring, installation kit, stainless steel frame and the Premium frame which tiles are fixed on to. The NOOD water trap is a mechanical trap which closes when there is no water present, thus preventing any foul air from escaping through the drain. This linear floor drain can be installed against the wall or elsewhere in the room.

#### Item 7110564

The Purus Line Premium 900 is a complete linear floor drain with a gable 50 mm outlet. It is designed for installation in wooden or concrete joists. The Purus Line Premium comes complete with a removable NOOD water trap, strainer, stainless steel clamping ring, installation kit, stainless steel frame and the Premium frame which tiles are fixed on to. The NOOD water trap is a mechanical trap which closes when there is no water present, thus preventing any foul air from escaping through the drain. This linear floor drain can be installed against the wall or elsewhere in the room.

#### Item 7110570

The Purus Line Premium 1000 is a complete linear floor drain with a gable 50 mm outlet. It is designed for installation in wooden or concrete joists. The Purus Line Premium comes complete with a removable NOOD water trap, strainer, stainless steel clamping ring, installation kit, stainless steel frame and the Premium frame which tiles are fixed on to. The NOOD water trap is a mechanical trap which closes when there is no water present, thus preventing any foul air from escaping through the drain. This linear floor drain can be installed against the wall or elsewhere in the room.

## Item 7110576

The Purus Line Premium 1200 is a complete linear floor drain with a gable 50 mm outlet. It is designed for installation in wooden or concrete joists. The Purus Line Premium comes complete with a removable NOOD water trap, strainer, stainless steel clamping ring, installation kit, stainless steel frame and the Premium frame which tiles are fixed on to. The NOOD water trap is a mechanical trap which closes when there is no water present, thus preventing any foul air from escaping through the drain. This linear floor drain can be installed against the wall or elsewhere in the room.

### Specifications

<b>Item Number</b>	7110546
<b>Dimension</b>	Ø50 mm
<b>Floor Construction</b>	Concrete/Wood
<b>Floor Covering</b>	Tiles
<b>Function</b>	End outlet
<b>Item Color</b>	Grey
<b>Material</b>	PP, ABS, Wood, Stainless steel 1.4301
<b>Pressure Flow Temp</b>	0,8 l/s
<b>Size</b>	600
<b>Version</b>	With frame and Premium rail

<b>Item Number</b>	7110552
<b>Dimension</b>	Ø50 mm
<b>Floor Construction</b>	Concrete/Wood
<b>Floor Covering</b>	Tiles
<b>Function</b>	End outlet
<b>Item Color</b>	Grey
<b>Material</b>	PP, ABS, Wood, Stainless steel 1.4301
<b>Pressure Flow Temp</b>	0,8 l/s
<b>Size</b>	700
<b>Version</b>	With frame and Premium rail

<b>Item Number</b>	7110558
<b>Dimension</b>	Ø50 mm
<b>Floor Construction</b>	Concrete/Wood
<b>Floor Covering</b>	Tiles
<b>Function</b>	End outlet
<b>Item Color</b>	Grey
<b>Material</b>	PP, ABS, Wood, Stainless steel 1.4301
<b>Pressure Flow Temp</b>	0,8 l/s

<b>Size</b>	800
<b>Version</b>	With frame and Premium rail
<b>Item Number</b>	7110564
<b>Dimension</b>	Ø50 mm
<b>Floor Construction</b>	Concrete/Wood
<b>Floor Covering</b>	Tiles
<b>Function</b>	End outlet
<b>Item Color</b>	Grey
<b>Material</b>	PP, ABS, Wood, Stainless steel 1.4301
<b>Pressure Flow Temp</b>	0,8 l/s

<b>Size</b>	900
<b>Version</b>	With frame and Premium rail
<b>Item Number</b>	7110570
<b>Dimension</b>	Ø50 mm
<b>Floor Construction</b>	Concrete/Wood
<b>Floor Covering</b>	Tiles
<b>Function</b>	End outlet
<b>Item Color</b>	Grey

<b>Material</b>	PP, ABS, Wood, Stainless steel 1.4301
<b>Pressure Flow Temp</b>	0,8 l/s
<b>Size</b>	1000
<b>Version</b>	With frame and Premium rail

<b>Item Number</b>	7110576
--------------------	---------

<b>Dimension</b>	Ø50 mm
------------------	--------

<b>Floor Construction</b>	Concrete/Wood
---------------------------	---------------

<b>Floor Covering</b>	Tiles
-----------------------	-------

<b>Function</b>	End outlet
-----------------	------------

<b>Item Color</b>	Grey
-------------------	------

<b>Material</b>	PP, ABS, Wood, Stainless steel 1.4301
-----------------	---------------------------------------

<b>Pressure Flow Temp</b>	0,8 l/s
---------------------------	---------

<b>Size</b>	1200
-------------	------

<b>Version</b>	With frame and Premium rail
----------------	-----------------------------