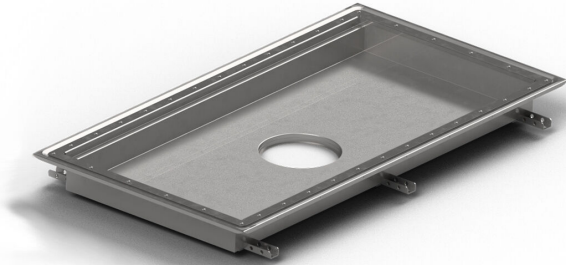


Item 818142

Purus channel volume for vinyl is a floor channel made of acid-resistant stainless steel for installation in concrete. The floor channel is 400x400x100 mm with a mid outlet and is intended for vinyl flooring. The floor channel needs to be supplemented with grid depending on the environment and outlet house in acid-resistant stainless steel. Purus channel volume is adapted for environments with requirements for hygiene, has a large volume and high flow capacity.



Item 818143

Purus channel volume for vinyl is a floor channel made of acid-resistant stainless steel for installation in concrete. The floor channel is 600x400x100 mm with a mid outlet and is intended for vinyl flooring.. The floor channel needs to be supplemented with grid depending on the environment and outlet house in acid-resistant stainless steel. Purus channel volume is adapted for environments with requirements for hygiene, has a large volume and high flow capacity.

Item 818144

Purus channel volume for vinyl is a floor channel made of acid-resistant stainless steel for installation in concrete. The floor channel is 900x600x100 mm med ett mittplacerat utlopp och är avsedd för plastmatta som ytskikt. The floor channel needs to be supplemented with grid depending on the environment and outlet house in acid-resistant stainless steel. Purus

channel volume is adapted for environments with requirements for hygiene, has a large volume and high flow capacity.

Item 818145

Purus channel volume for vinyl is a floor channel made of acid-resistant stainless steel for installation in concrete. The floor channel is 800x500x100 mm with a mid outlet and is intended for vinyl flooring. The floor channel needs to be supplemented with grid depending on the environment and outlet house in acid-resistant stainless steel. Purus channel volume is adapted for environments with requirements for hygiene, has a large volume and high flow capacity.

Item 818149

Purus channel volume for vinyl is a floor channel made of acid-resistant stainless steel for installation in concrete. The floor channel is 1200x600x100 mm med ett mittplacerat utlopp och är avsedd för plastmatta som ytskikt. The floor channel needs to be supplemented with grid depending on the environment and outlet house in acid-resistant stainless steel. Purus channel volume is adapted for environments with requirements for hygiene, has a large volume and high flow capacity.

Item 818155

Purus channel volume for vinyl is a floor channel made of acid-resistant stainless steel for installation in concrete. The floor channel is 500x300x50 mm med ett mittplacerat utlopp och är avsedd för plastmatta som ytskikt. The floor channel

needs to be supplemented with grid depending on the environment and outlet house in acid-resistant stainless steel. Purus channel volume is adapted for environments with requirements for hygiene, has a large volume and high flow capacity.

Item 818156

Purus channel volume for vinyl is a floor channel made of acid-resistant stainless steel for installation in concrete. The floor channel is 1000x300x50 mm with a mid outlet and is intended for vinyl flooring. The floor channel needs to be supplemented with grid depending on the environment and outlet house in acid-resistant stainless steel. Purus channel volume is adapted for environments with requirements for hygiene, has a large volume and high flow capacity.

Item 818157

Purus channel volume for vinyl is a floor channel made of acid-resistant stainless steel for installation in concrete. The floor channel is 300x300x200 mm med ett mittplacerat utlopp och är avsedd för plastmatta som ytskikt. The floor channel needs to be supplemented with grid depending on the environment and outlet house in acid-resistant stainless steel. Purus channel volume is adapted for environments with requirements for hygiene, has a large volume and high flow capacity.

Item 818158

Purus channel volume for vinyl is a floor channel made of acid-resistant stainless steel for installation in concrete. The floor

channel is 500x300x200 mm with a mid outlet and is intended for vinyl flooring. The floor channel needs to be supplemented with grid depending on the environment and outlet house in acid-resistant stainless steel. Purus channel volume is adapted for environments with requirements for hygiene, has a large volume and high flow capacity.

Item 818159

Purus channel volume for vinyl is a floor channel made of acid-resistant stainless steel for installation in concrete. The floor channel is 800x500x200 mm with a mid outlet and is intended for vinyl flooring. The floor channel needs to be supplemented with grid depending on the environment and outlet house in acid-resistant stainless steel. Purus channel volume is adapted for environments with requirements for hygiene, has a large volume and high flow capacity.

Item 856723

Purus channel volume for vinyl is a floor channel made of acid-resistant stainless steel for installation in concrete. The floor channel is 900x600x200 mm med ett mittplacerat utlopp och är avsedd för plastmatta som ytskikt. The floor channel needs to be supplemented with grid depending on the environment and outlet house in acid-resistant stainless steel. Purus channel volume is adapted for environments with requirements for hygiene, has a large volume and high flow capacity.

Purus channel volume for vinyl is a floor channel made of acid-resistant stainless steel for installation in concrete. The floor channel is 400x400x100 mm with a mid outlet and is intended for vinyl flooring. The floor channel needs to be supplemented with grid depending on the environment and outlet house in acid-resistant stainless steel. Purus channel volume is adapted for environments with requirements for hygiene, has a large volume and high flow capacity.

Item Number	818142
Dimension	Side/bottom in stainless steel in Ø75/Ø110 mm
Electrical Data	15 l
Floor Construction	Concrete flooring
Floor Covering	Vinyl
Function	Central outlet
Item Color	Stainless
Material	Acid-resistant stainless steel 1.4404
Size	400x400x100 mm
Surface	Pickled
Version	Do not forget grid/outlet house

Item Number	818143
Dimension	Side/bottom in stainless steel in Ø75/Ø110 mm
Electrical Data	23 l
Floor Construction	Concrete flooring

Floor Covering	Vinyl
Function	Central outlet
Item Color	Stainless
Material	Acid-resistant stainless steel 1.4404
Size	600x400x100 mm
Surface	Pickled
Version	Do not forget grid/outlet house
Item Number	818144
Dimension	Side/bottom in stainless steel in Ø75/Ø110 mm
Electrical Data	51 l
Floor Construction	Concrete flooring
Floor Covering	Vinyl
Function	Central outlet
Item Color	Stainless
Material	Acid-resistant stainless steel 1.4404
Size	900x600x100 mm
Surface	Pickled
Version	Do not forget grid/outlet house
Item Number	818145

Dimension	Side/bottom in stainless steel in Ø75/Ø110 mm
Electrical Data	38 l
Floor Construction	Concrete flooring
Floor Covering	Vinyl
Function	Central outlet
Item Color	Stainless
Material	Acid-resistant stainless steel 1.4404
Size	800x500x100 mm
Surface	Pickled
Version	Do not forget grid/outlet house
Item Number	818149
Dimension	Side/bottom in stainless steel in Ø75/Ø110 mm
Floor Construction	Concrete flooring
Floor Covering	Vinyl
Function	Central outlet
Item Color	Stainless
Material	Acid-resistant stainless steel 1.4404
Size	1200x600x100 mm

Surface	Pickled
Version	Do not forget grid/outlet house
Item Number	818155
Dimension	Side/bottom in stainless steel in Ø75/Ø110 mm
Floor Construction	Concrete flooring
Floor Covering	Vinyl
Function	Central outlet
Item Color	Stainless
Material	Acid-resistant stainless steel 1.4404
Size	500x300x50 mm
Surface	Pickled
Version	Do not forget grid/outlet house
Item Number	818156
Dimension	Side/bottom in stainless steel in Ø75/Ø110 mm
Floor Construction	Concrete flooring
Floor Covering	Vinyl
Function	Central outlet
Item Color	Stainless

Material	Acid-resistant stainless steel 1.4404
Size	1000x300x50 mm
Surface	Pickled
Version	Do not forget grid/outlet house

Item Number	818157
Dimension	Side/bottom in stainless steel in Ø75/Ø110 mm

Floor Construction	Concrete flooring
---------------------------	-------------------

Floor Covering	Vinyl
-----------------------	-------

Function	Central outlet
-----------------	----------------

Item Color	Stainless
-------------------	-----------

Material	Acid-resistant stainless steel 1.4404
Size	300x300x200 mm
Surface	Pickled
Version	Do not forget grid/outlet house

Item Number	818158
Dimension	Side/bottom in stainless steel in Ø75/Ø110 mm

Floor Construction	Concrete flooring
---------------------------	-------------------

Floor Covering	Vinyl
-----------------------	-------

Function	Central outlet
Item Color	Stainless
Material	Acid-resistant stainless steel 1.4404
Size	500x300x200 mm
Surface	Pickled
Version	Do not forget grid/outlet house
Item Number	818159
Dimension	Side/bottom in stainless steel in Ø75/Ø110 mm
Floor Construction	Concrete flooring
Floor Covering	Vinyl
Function	Central outlet
Item Color	Stainless
Material	Acid-resistant stainless steel 1.4404
Size	800x500x200 mm
Surface	Pickled
Version	Do not forget grid/outlet house
Item Number	856723
Dimension	Side/bottom in stainless steel in Ø75/Ø110 mm

Floor Construction	Concrete flooring
Floor Covering	Concrete
Function	Central outlet
Item Color	Stainless
Material	Acid-resistant stainless steel 1.4404
Size	900x600x200 mm
Surface	Pickled
Version	Do not forget grid/outlet house