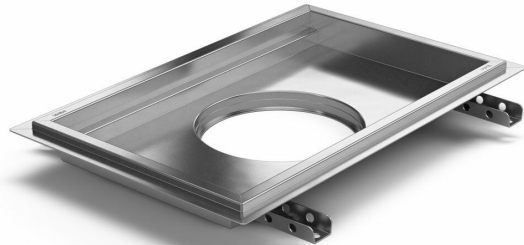


## Item 818172



Purus channel volume for epoxy is a floor channel made of acid-resistant stainless steel for installation in concrete. The floor channel is 1000x300x50 mm with a mid outlet and is intended for epoxy flooring. The floor channel needs to be supplemented with grid depending on the environment and outlet house in acid-resistant stainless steel. Purus channel volume is adapted for environments with requirements for hygiene, has a large volume and high flow capacity.



MagiCAD

## Specifications

<b>Item Number</b>	818172
<b>Floor Construction</b>	Concrete flooring
<b>Floor Covering</b>	Resin
<b>Function</b>	Central outlet
<b>Item Color</b>	Stainless
<b>Material</b>	Acid-resistant stainless steel 1.4404
<b>Outlet Dimension</b>	Side/bottom in stainless steel in Ø75/Ø110 mm
<b>Size</b>	1000x300x50 mm

**Surface**

Pickled

**Version**

Do not forget grid/outlet house

Dimension (mm)	LxWxH (mm)	Dimension (mm)	LxWxH (mm)
500x300x50	503 x 303 x 50	1200x600x100	1203 x 603 x 100
1000x300x50	1003 x 303 x 50	300x300x200	303 x 303 x 200
400x400x100	403 x 403 x 100	500x300x200	503 x 303 x 200
600x400x100	603 x 403 x 100	800x500x200	803 x 503 x 200
800x500x100	803 x 503 x 100		
900x600x100	903 x 603 x 100		
900x600x200	903 x 603 x 200		

