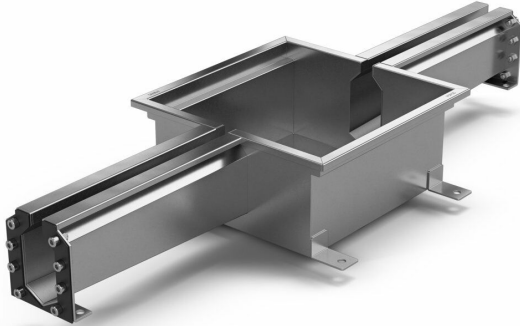


## Item 855650

Purus channel spalte module is made of acid-resistant stainless steel for installation in concrete. The floor channel is intended for concrete, epoxy and tile floors without a waterproofing membrane Purus channel spalte module brunnen är 300x300x150, has an inlet and the outlet in the channel is located in the middle. Complete Purus channel spalte module drain with grid outlet house in acid-proof stainless steel and water trap.



## Item 855651

Purus channel spalte module is made of acid-resistant stainless steel for installation in concrete. The floor channel is intended for concrete, epoxy and tile floors without a waterproofing membrane Purus channel spalte module brunnen är 300x300x150, has two inlets and the outlet in the channel is located in the middle. Complete Purus channel spalte module drain with grid outlet house in acid-proof stainless steel and water trap.

## Specifications

Purus channel spalte module is made of acid-resistant stainless steel for installation in concrete. The floor channel is intended for concrete, epoxy and tile floors without a waterproofing membrane Purus channel spalte module brunnen är 300x300x150, has an inlet and the outlet in the channel is located in the middle. Complete Purus channel spalte module drain with grid outlet house in acid-proof stainless steel and water trap.

**Item Number**

855650

<b>Dimension</b>	Ø75/Ø110 mm
<b>Function</b>	Bottom outlet
<b>Item Color</b>	Stainless
<b>Material</b>	Acid-resistant stainless steel 1.4404
<b>Size</b>	300×300 mm
<b>Surface</b>	Pickled
<b>Item Number</b>	855651
<b>Dimension</b>	Ø75/Ø110 mm
<b>Function</b>	Bottom outlet
<b>Item Color</b>	Stainless
<b>Material</b>	Acid-resistant stainless steel 1.4404
<b>Size</b>	300×300 mm
<b>Surface</b>	Pickled