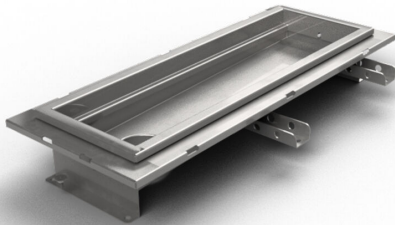


Item 856670

Purus channel 150 is a channel made of acid-resistant stainless steel for installation in concrete floors. The channel has a central outlet and is intended for tiled floors as a surface layer. Supplement with gully base in plastic or acid-resistant stainless steel and mesh grate for higher load classes or grating for K3 (300 kg) load.



Item 856671

Purus channel 150 is a channel made of acid-resistant stainless steel for installation in concrete floors. The channel has a central outlet and is intended for tiled floors as a surface layer. Supplement with gully base in plastic or acid-resistant stainless steel and mesh grate for higher load classes or grating for K3 (300 kg) load.

Item 856672

Purus channel 150 is a channel made of acid-resistant stainless steel for installation in concrete floors. The channel has a central outlet and is intended for tiled floors as a surface layer. Supplement with gully base in plastic or acid-resistant stainless steel and mesh grate for higher load classes or grating for K3 (300 kg) load.

Item 856591

Purus channel 150 is a channel made of acid-resistant stainless steel for installation in concrete floors. The channel has a central outlet and is intended for tiled floors as a

surface layer. Supplement with gully base in plastic or acid-resistant stainless steel and mesh grate for higher load classes or grating for K3 (300 kg) load.

Item 856592

Purus channel 150 is a channel made of acid-resistant stainless steel for installation in concrete floors. The channel has a central outlet and is intended for tiled floors as a surface layer. Supplement with gully base in plastic or acid-resistant stainless steel and mesh grate for higher load classes or grating for K3 (300 kg) load.

Item 856663

Purus channel 150 is a channel made of acid-resistant stainless steel for installation in concrete floors. The channel has a central outlet and is intended for tiled floors as a surface layer. Supplement with gully base in plastic or acid-resistant stainless steel and mesh grate for higher load classes or grating for K3 (300 kg) load.

Item 856664

Purus channel 150 is a channel made of acid-resistant stainless steel for installation in concrete floors. The channel has a central outlet and is intended for tiled floors as a surface layer. Supplement with gully base in plastic or acid-resistant stainless steel and mesh grate for higher load classes or grating for K3 (300 kg) load.

Item 856665

Purus channel 150 is a channel made of acid-resistant stainless steel for installation in concrete floors. The channel has a central outlet and is intended for tiled floors as a surface layer. Supplement with gully base in plastic or acid-resistant stainless steel and mesh grate for higher load classes or grating for K3 (300 kg) load.

Item 856666

Purus channel 150 is a channel made of acid-resistant stainless steel for installation in concrete floors. The channel has a central outlet and is intended for tiled floors as a surface layer. Supplement with gully base in plastic or acid-resistant stainless steel and mesh grate for higher load classes or grating for K3 (300 kg) load.

Item 856667

Purus channel 150 is a channel made of acid-resistant stainless steel for installation in concrete floors. The channel has a central outlet and is intended for tiled floors as a surface layer. Supplement with gully base in plastic or acid-resistant stainless steel and mesh grate for higher load classes or grating for K3 (300 kg) load.

Item 856668

Purus channel 150 is a channel made of acid-resistant stainless steel for installation in concrete floors. The channel has a central outlet and is intended for tiled floors as a surface layer. Supplement with gully base in plastic or acid-resistant stainless steel and mesh grate for higher load classes or grating for K3 (300 kg) load.

Item 856669

Purus channel 150 is a channel made of acid-resistant stainless steel for installation in concrete floors. The channel has a central outlet and is intended for tiled floors as a surface layer. Supplement with gully base in plastic or acid-resistant stainless steel and mesh grate for higher load classes or grating for K3 (300 kg) load.

Specifications

Item Number	856670
Dimension	Bottom/side in plastic or stainless steel in Ø50, Ø75 or Ø 110 mm
Floor Construction	Concrete flooring
Floor Covering	Tile floor with glueing flange
Function	End outlet
Item Color	Stainless
Material	Acid-resistant stainless steel 1.4404
Size	800×150 mm
Surface	Pickled
Version	Do not forget grid/outlet house
Item Number	856671
Dimension	Bottom/side in plastic or stainless steel in Ø50, Ø75 or Ø 110 mm

Floor Construction	Concrete flooring
Floor Covering	Tile floor with glueing flange
Function	End outlet
Item Color	Stainless
Material	Acid-resistant stainless steel 1.4404
Size	1000×150 mm
Surface	Pickled
Version	Do not forget grid/outlet house
Item Number	856672
Dimension	Bottom/side in plastic or stainless steel in Ø50, Ø75 or Ø 110 mm
Floor Construction	Concrete flooring
Floor Covering	Tile floor with glueing flange
Function	End outlet
Item Color	Stainless
Material	Acid-resistant stainless steel 1.4404
Size	1200×150 mm
Surface	Pickled
Version	Do not forget grid/outlet house

Item Number	856591
Dimension	Bottom/side in plastic or stainless steel in Ø50, Ø75 or Ø 110 mm
Floor Construction	Concrete flooring
Floor Covering	Tile floor with glueing flange
Function	End outlet
Item Color	Stainless
Material	Acid-resistant stainless steel 1.4404
Size	500×150 mm
Surface	Pickled
Version	Do not forget grid/outlet house

Item Number	856592
Dimension	Bottom/side in plastic or stainless steel in Ø50, Ø75 or Ø 110 mm
Floor Construction	Concrete flooring
Floor Covering	Tile floor with glueing flange
Function	End outlet
Item Color	Stainless
Material	Acid-resistant stainless steel 1.4404
Size	1300×150 mm

Surface	Pickled
Version	Do not forget grid/outlet house
Item Number	856663
Dimension	Bottom/side in plastic or stainless steel in Ø50, Ø75 or Ø 110 mm
Floor Construction	Concrete flooring
Floor Covering	Tile floor with glueing flange
Function	End outlet
Item Color	Stainless
Material	Acid-resistant stainless steel 1.4404
Size	600×150 mm
Surface	Pickled
Version	Do not forget grid/outlet house
Item Number	856664
Dimension	Bottom/side in plastic or stainless steel in Ø50, Ø75 or Ø 110 mm
Floor Construction	Concrete flooring
Floor Covering	Tile floor with glueing flange
Function	End outlet
Item Color	Stainless

Material	Acid-resistant stainless steel 1.4404
Size	900×150 mm
Surface	Pickled
Version	Do not forget grid/outlet house

Item Number	856665
Dimension	Bottom/side in plastic or stainless steel in Ø50, Ø75 or Ø 110 mm
Floor Construction	Concrete flooring
Floor Covering	Tile floor with glueing flange
Function	End outlet

Item Color	Stainless
Material	Acid-resistant stainless steel 1.4404
Size	1100×150 mm
Surface	Pickled
Version	Do not forget grid/outlet house

Item Number	856666
Dimension	Bottom/side in plastic or stainless steel in Ø50, Ø75 or Ø 110 mm
Floor Construction	Concrete flooring
Floor Covering	Tile floor with glueing flange

Function	End outlet
Item Color	Stainless
Material	Acid-resistant stainless steel 1.4404
Size	1400×150 mm
Surface	Pickled
Version	Do not forget grid/outlet house
Item Number	856667
Dimension	Bottom/side in plastic or stainless steel in Ø50, Ø75 or Ø 110 mm
Floor Construction	Concrete flooring
Floor Covering	Tile floor with glueing flange
Function	End outlet
Item Color	Stainless
Material	Acid-resistant stainless steel 1.4404
Size	1500×150 mm
Surface	Pickled
Version	Do not forget grid/outlet house
Item Number	856668
Dimension	Bottom/side in plastic or stainless steel in Ø50, Ø75 or Ø 110 mm

Floor Construction	Concrete flooring
Floor Covering	Tile floor with glueing flange
Function	End outlet
Item Color	Stainless
Material	Acid-resistant stainless steel 1.4404
Size	2000×150 mm
Surface	Pickled
Version	Do not forget grid/outlet house
Item Number	856669
Dimension	Bottom/side in plastic or stainless steel in Ø50, Ø75 or Ø 110 mm
Floor Construction	Concrete flooring
Floor Covering	Tile floor with glueing flange
Function	End outlet
Item Color	Stainless
Material	Acid-resistant stainless steel 1.4404
Size	2500×150 mm
Surface	Pickled
Version	Do not forget grid/outlet house

Dimension (mm)	LxW (mm)	H (mm)
500x150	502x151	66,3
600x150	602x151	66,3
800x150	802x151	66,3
900x150	905x151	66,3
1000x150	1002x151	66,3
1100x150	1102x151	71,3
1200x150	1202x151	71,3
1300x150	1302x151	71,3
1400x150	1402x151	71,3
1500x150	1502x151	71,3
2000x150	2002x151	76,3
2500x150	2502x151	76,3

