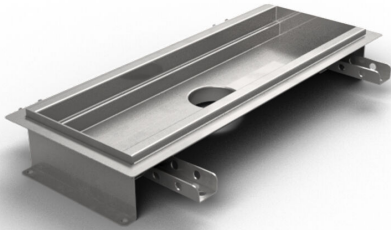


Item 856620

Purus channel 150 is a channel made of acid-resistant stainless steel for installation in concrete floors. The channel has a central outlet and is intended for resin floors as a surface layer. Supplement with gully base in plastic or acid-resistant stainless steel and mesh grate for higher load classes or grating for K3 (300 kg) load.



Item 856621

Purus channel 150 is a channel made of acid-resistant stainless steel for installation in concrete floors. The channel has a central outlet and is intended for resin floors as a surface layer. Supplement with gully base in plastic or acid-resistant stainless steel and mesh grate for higher load classes or grating for K3 (300 kg) load.

Item 856622

Purus channel 150 is a channel made of acid-resistant stainless steel for installation in concrete floors. The channel has a central outlet and is intended for resin floors as a surface layer. Supplement with gully base in plastic or acid-resistant stainless steel and mesh grate for higher load classes or grating for K3 (300 kg) load.

Item 856585

Purus channel 150 is a channel made of acid-resistant stainless steel for installation in concrete floors. The channel has a central outlet and is intended for resin floors as a

surface layer. Supplement with gully base in plastic or acid-resistant stainless steel and mesh grate for higher load classes or grating for K3 (300 kg) load.

Item 856586

Purus channel 150 is a channel made of acid-resistant stainless steel for installation in concrete floors. The channel has a central outlet and is intended for resin floors as a surface layer. Supplement with gully base in plastic or acid-resistant stainless steel and mesh grate for higher load classes or grating for K3 (300 kg) load.

Item 856633

Purus channel 150 is a channel made of acid-resistant stainless steel for installation in concrete floors. The channel has a central outlet and is intended for resin floors as a surface layer. Supplement with gully base in plastic or acid-resistant stainless steel and mesh grate for higher load classes or grating for K3 (300 kg) load.

Item 856634

Purus channel 150 is a channel made of acid-resistant stainless steel for installation in concrete floors. The channel has a central outlet and is intended for resin floors as a surface layer. Supplement with gully base in plastic or acid-resistant stainless steel and mesh grate for higher load classes or grating for K3 (300 kg) load.

Item 856635

Purus channel 150 is a channel made of acid-resistant stainless steel for installation in concrete floors. The channel has a central outlet and is intended for resin floors as a surface layer. Supplement with gully base in plastic or acid-resistant stainless steel and mesh grate for higher load classes or grating for K3 (300 kg) load.

Item 856636

Purus channel 150 is a channel made of acid-resistant stainless steel for installation in concrete floors. The channel has a central outlet and is intended for resin floors as a surface layer. Supplement with gully base in plastic or acid-resistant stainless steel and mesh grate for higher load classes or grating for K3 (300 kg) load.

Item 856637

Purus channel 150 is a channel made of acid-resistant stainless steel for installation in concrete floors. The channel has a central outlet and is intended for resin floors as a surface layer. Supplement with gully base in plastic or acid-resistant stainless steel and mesh grate for higher load classes or grating for K3 (300 kg) load.

Item 856638

Purus channel 150 is a channel made of acid-resistant stainless steel for installation in concrete floors. The channel has a central outlet and is intended for resin floors as a surface layer. Supplement with gully base in plastic or acid-resistant stainless steel and mesh grate for higher load classes or grating for K3 (300 kg) load.

Item 856639

Purus channel 150 is a channel made of acid-resistant stainless steel for installation in concrete floors. The channel has a central outlet and is intended for resin floors as a surface layer. Supplement with gully base in plastic or acid-resistant stainless steel and mesh grate for higher load classes or grating for K3 (300 kg) load.

Specifications

Item Number	856620
Dimension	Bottom/side in plastic or stainless steel in Ø50, Ø75 or Ø 110 mm
Floor Construction	Concrete flooring
Floor Covering	Resin
Function	Central outlet
Item Color	Stainless
Material	Acid-resistant stainless steel 1.4404
Size	800×150 mm
Surface	Pickled
Version	Do not forget grid/outlet house
Item Number	856621
Dimension	Bottom/side in plastic or stainless steel in Ø50, Ø75 or Ø 110 mm

Floor Construction	Concrete flooring
Floor Covering	Resin
Function	Central outlet
Item Color	Stainless
Material	Acid-resistant stainless steel 1.4404
Size	1000×150 mm
Surface	Pickled
Version	Do not forget grid/outlet house
Item Number	856622
Dimension	Bottom/side in plastic or stainless steel in Ø50, Ø75 or Ø 110 mm
Floor Construction	Concrete flooring
Floor Covering	Resin
Function	Central outlet
Item Color	Stainless
Material	Acid-resistant stainless steel 1.4404
Size	1200×150 mm
Surface	Pickled
Version	Do not forget grid/outlet house

Item Number	856585
Dimension	Bottom/side in plastic or stainless steel in Ø50, Ø75 or Ø 110 mm
Floor Construction	Concrete flooring
Floor Covering	Resin
Function	Central outlet
Item Color	Stainless
Material	Acid-resistant stainless steel 1.4404
Size	500×150 mm
Surface	Pickled
Version	Do not forget grid/outlet house

Item Number	856586
Dimension	Bottom/side in plastic or stainless steel in Ø50, Ø75 or Ø 110 mm
Floor Construction	Concrete flooring
Floor Covering	Resin
Function	Central outlet
Item Color	Stainless
Material	Acid-resistant stainless steel 1.4404
Size	1300×150 mm

Surface	Pickled
Version	Do not forget grid/outlet house
Item Number	856633
Dimension	Bottom/side in plastic or stainless steel in Ø50, Ø75 or Ø 110 mm
Floor Construction	Concrete flooring
Floor Covering	Resin
Function	Central outlet
Item Color	Stainless
Material	Acid-resistant stainless steel 1.4404
Size	600×150 mm
Surface	Pickled
Version	Do not forget grid/outlet house
Item Number	856634
Dimension	Bottom/side in plastic or stainless steel in Ø50, Ø75 or Ø 110 mm
Floor Construction	Concrete flooring
Floor Covering	Resin
Function	Central outlet
Item Color	Stainless

Material	Acid-resistant stainless steel 1.4404
Size	900×150 mm
Surface	Pickled
Version	Do not forget grid/outlet house

Item Number	856635
Dimension	Bottom/side in plastic or stainless steel in Ø50, Ø75 or Ø 110 mm
Floor Construction	Concrete flooring
Floor Covering	Resin
Function	Central outlet

Item Color	Stainless
Material	Acid-resistant stainless steel 1.4404
Size	1100×150 mm
Surface	Pickled
Version	Do not forget grid/outlet house

Item Number	856636
Dimension	Bottom/side in plastic or stainless steel in Ø50, Ø75 or Ø 110 mm
Floor Construction	Concrete flooring
Floor Covering	Resin

Function	Central outlet
Item Color	Stainless
Material	Acid-resistant stainless steel 1.4404
Size	1400×150 mm
Surface	Pickled
Version	Do not forget grid/outlet house
Item Number	856637
Dimension	Bottom/side in plastic or stainless steel in Ø50, Ø75 or Ø 110 mm
Floor Construction	Concrete flooring
Floor Covering	Resin
Function	Central outlet
Item Color	Stainless
Material	Acid-resistant stainless steel 1.4404
Size	1500×150 mm
Surface	Pickled
Version	Do not forget grid/outlet house
Item Number	856638
Dimension	Bottom/side in plastic or stainless steel in Ø50, Ø75 or Ø 110 mm

Floor Construction	Concrete flooring
Floor Covering	Resin
Function	Central outlet
Item Color	Stainless
Material	Acid-resistant stainless steel 1.4404
Size	2000×150 mm
Surface	Pickled
Version	Do not forget grid/outlet house
Item Number	856639
Dimension	Bottom/side in plastic or stainless steel in Ø50, Ø75 or Ø 110 mm
Floor Construction	Concrete flooring
Floor Covering	Resin
Function	Central outlet
Item Color	Stainless
Material	Acid-resistant stainless steel 1.4404
Size	2500×150 mm
Surface	Pickled
Version	Do not forget grid/outlet house

Dimension (mm)	LxW (mm)	H (mm)
500x150	502x151	66,3
600x150	602x151	66,3
800x150	802x151	66,3
900x150	905x151	66,3
1000x150	1002x151	66,3
1100x150	1102x151	71,3
1200x150	1202x151	71,3
1300x150	1302x151	71,3
1400x150	1402x151	71,3
1500x150	1502x151	71,3
2000x150	2002x151	76,3
2500x150	2502x151	76,3

